

Swindon and Wiltshire Youth Justice Service- Police and Crime Panel-September 2023



YJS Partnership Vision-Swindon

YJS SHARED VISION:

‘We aim to become a centre of excellence for child first and identity development practice. We will always seek to work in partnership with children and families, supporting children to engage with Activities, Interactions and Roles that will support the development of pro-social identity’



2021-24 Youth justice strategic priorities-Swindon

- Reducing First Time Entrants.
- Reducing re-offending rates and offences per re-offender.
- Further developing the child first model in Swindon and across the wider partnership
- Reducing the use of custody – including police custody and the use of custodial remands.
- Reducing youth violence – driving the work of the youth safety strategy and Serious Violence Duty (shared priority with Community Safety Partnership).
- Reducing disproportionality with a continued focus on children from mixed ethnicity.

Cross cutting themes and priorities

- Increasing participation with a focus on our practice model – Identity development
- Improving emotional and mental health and wellbeing (shared priority with education and public health).
- Reducing the number of children who are Not in Education, Employment or training (shared priority with education)

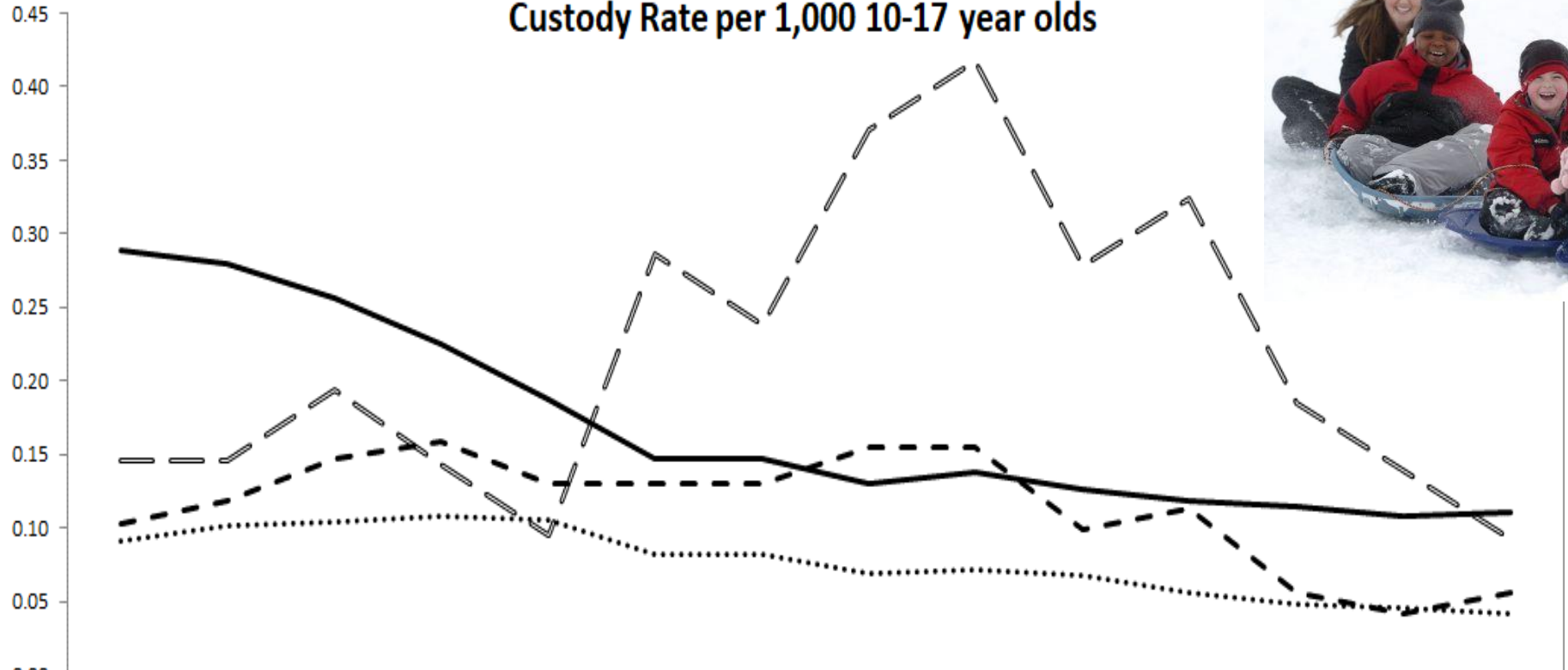
The priorities for 2023/24 remain similar to 2022/23 with the wider overarching vision and ambition to become a Centre of Excellence for Child First and Identity Development practice.



Swindon's Child First Journey- Mount Swindon 2021



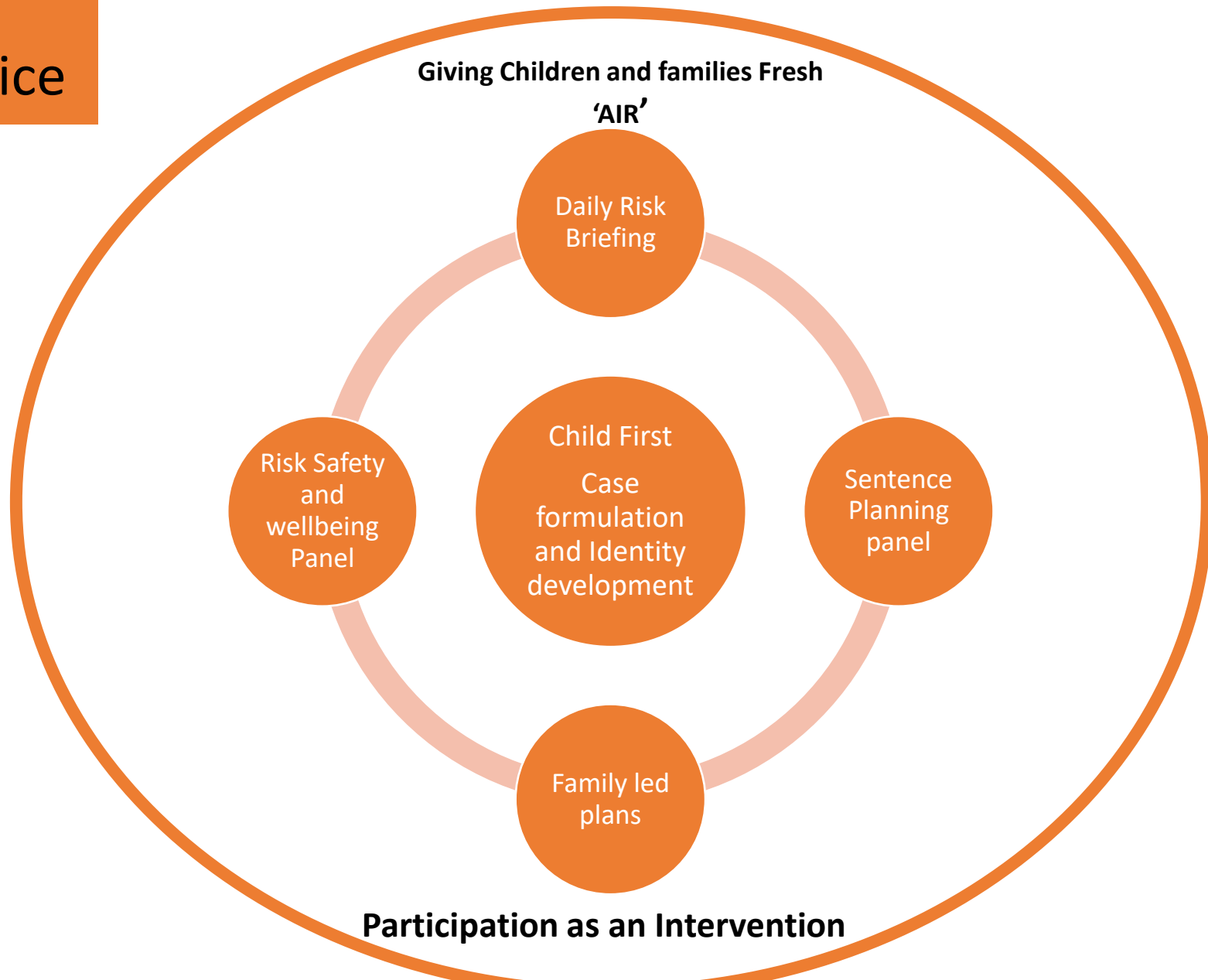
Custody Rate per 1,000 10-17 year olds



	Jul 18 - Jun 19	Oct 18 - Sep 19	Jan 19 - Dec 19	Apr 19 - Mar 20	Jul 19 - Jun 20	Oct 19 - Sep 20	Jan 20 - Dec 20	Apr 20 - Mar 21	Jul 20 - Jun 21	Oct 20 - Sep 21	Jan 21 - Dec 21	Apr 21 - Mar 22	Jul 21 - Jun 22	Oct 21 - Sep 22
— Swindon	0.15	0.15	0.19	0.14	0.10	0.29	0.24	0.37	0.42	0.28	0.32	0.19	0.14	0.09
..... South West	0.09	0.10	0.10	0.11	0.11	0.08	0.08	0.07	0.07	0.07	0.06	0.05	0.05	0.04
- - - Wiltshire PCC Area	0.10	0.12	0.15	0.16	0.13	0.13	0.13	0.16	0.16	0.10	0.11	0.06	0.04	0.06
— England & Wales	0.29	0.28	0.26	0.22	0.19	0.15	0.15	0.13	0.14	0.13	0.12	0.12	0.11	0.11



Swindon YJS Model of Practice



Child First-ABCD

The guiding principle for the youth justice system

Child First means that all youth justice services...

As children

Prioritise the best interests of children and recognising their particular needs, capacities, rights and potential. All work is child-focused, developmentally informed, acknowledges structural barriers and meets responsibilities towards children.

Building pro-social identity

Promote children's individual strengths and capacities to develop their pro-social identity for sustainable desistance, leading to safer communities and fewer victims. All work is constructive and future-focused, built on supportive relationships that empower children to fulfil their potential and make positive contributions to society.

Collaborating with children

Encourage children's active participation, engagement and wider social inclusion. All work is a meaningful collaboration with children and their carers.

Diverting from stigma

Promote a childhood removed from the justice system, using pre-emptive prevention, diversion and minimal intervention. All work minimises criminogenic stigma from contact with the system.



Case formulation approaches to understand meaning

Predisposing

Pre-existing factors that may have contributed? Includes environmental, family history, developmental history etc.
Attachment theory, trauma theory

Precipitating

What factors have contributed to the onset of the current problems? Why now? Including stressful life events, such as: Loss, exams, sexuality, access to new information, mental, physical illness in the family, new peer group, change in circumstances, trauma and abuse

Presenting

Details about the current problem/offence/behaviour. When did it start? Symptoms/impact? When did it start? Frequency? Links to other behaviours/Co-morbidities

Perpetuating

What is keeping the problem/behaviours going? Any beliefs, interactions or actions contributing to the maintenance of the behaviours/problems?

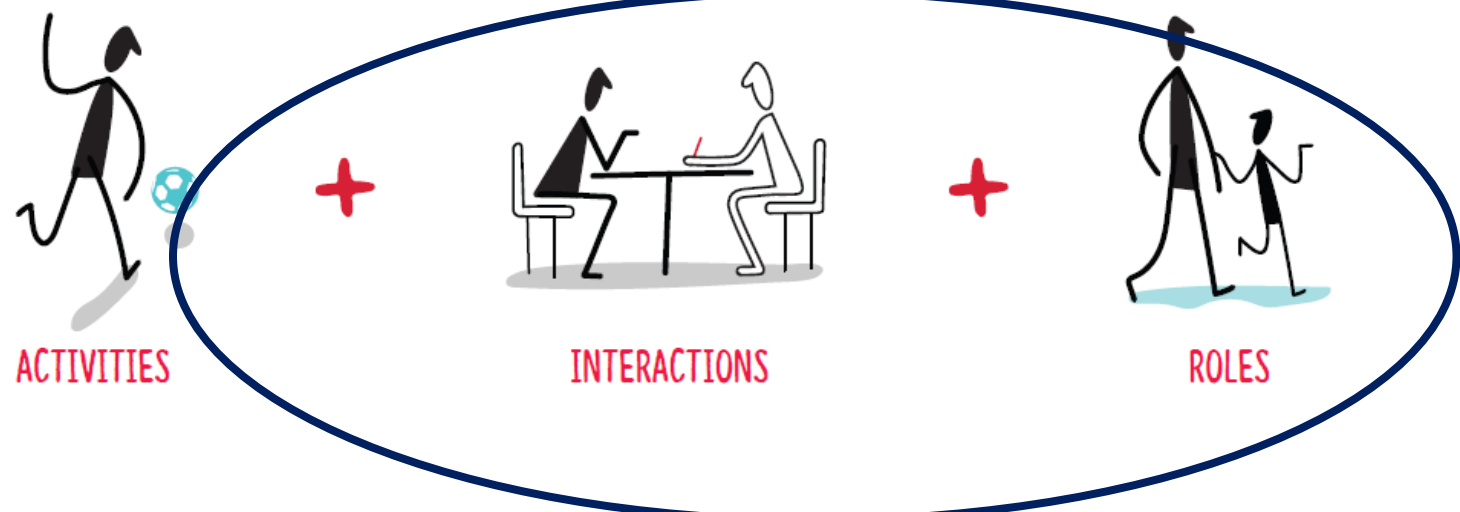
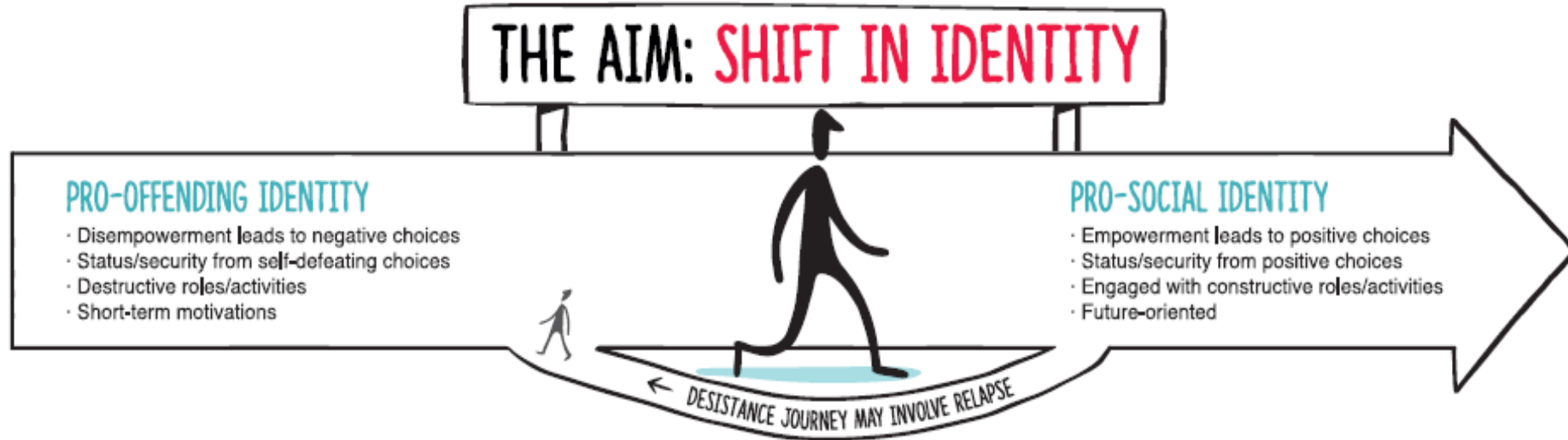
Protective

What strengths and resources are readily available? What factors reduce the risk/ severity of the behaviours? What needs to be put in place to limit, mitigate or reduce risk?

What behaviours, beliefs, values, relationships need to be developed further?



Identity Development for Desistance-Child First



(Hazel and NACRO)



Wiltshire Youth Justice Service : strategic and operational priorities 23/ 24

- Monitoring and responding to First Time Entrants and Custody rates
- The Serious Violence Duty and a local model of Focused Deterrence
- Standards for children self-assessment relating to work in Court
- Completing the new KPI framework and our review of Health provision
- Further partnership integration relating to children missing education
- Review of our service to victims in line with new HMIP inspection standards
- Continued Board engagement in relation to child's voice, disproportionality and child exploitation

Focused Deterrence visualisation of model-children and adults

